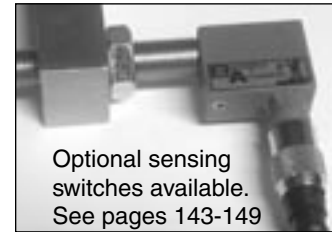
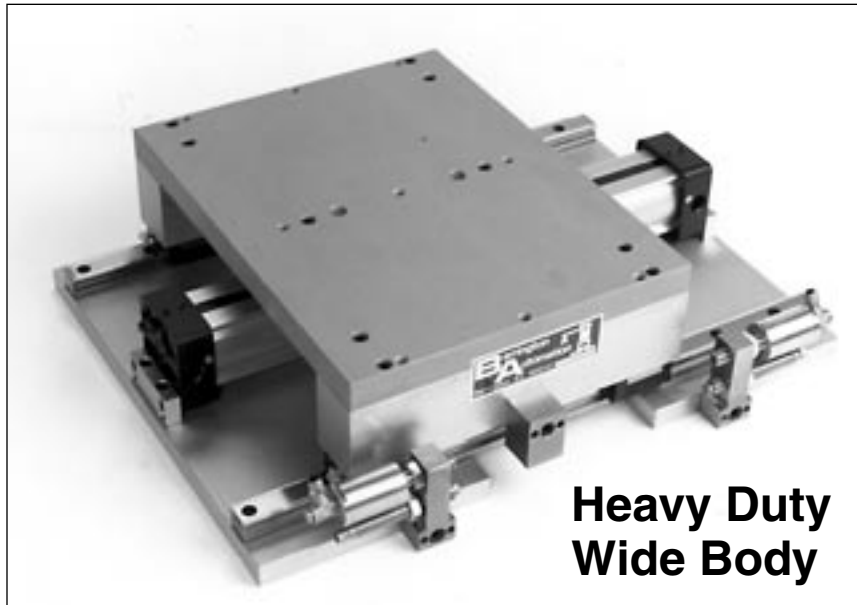
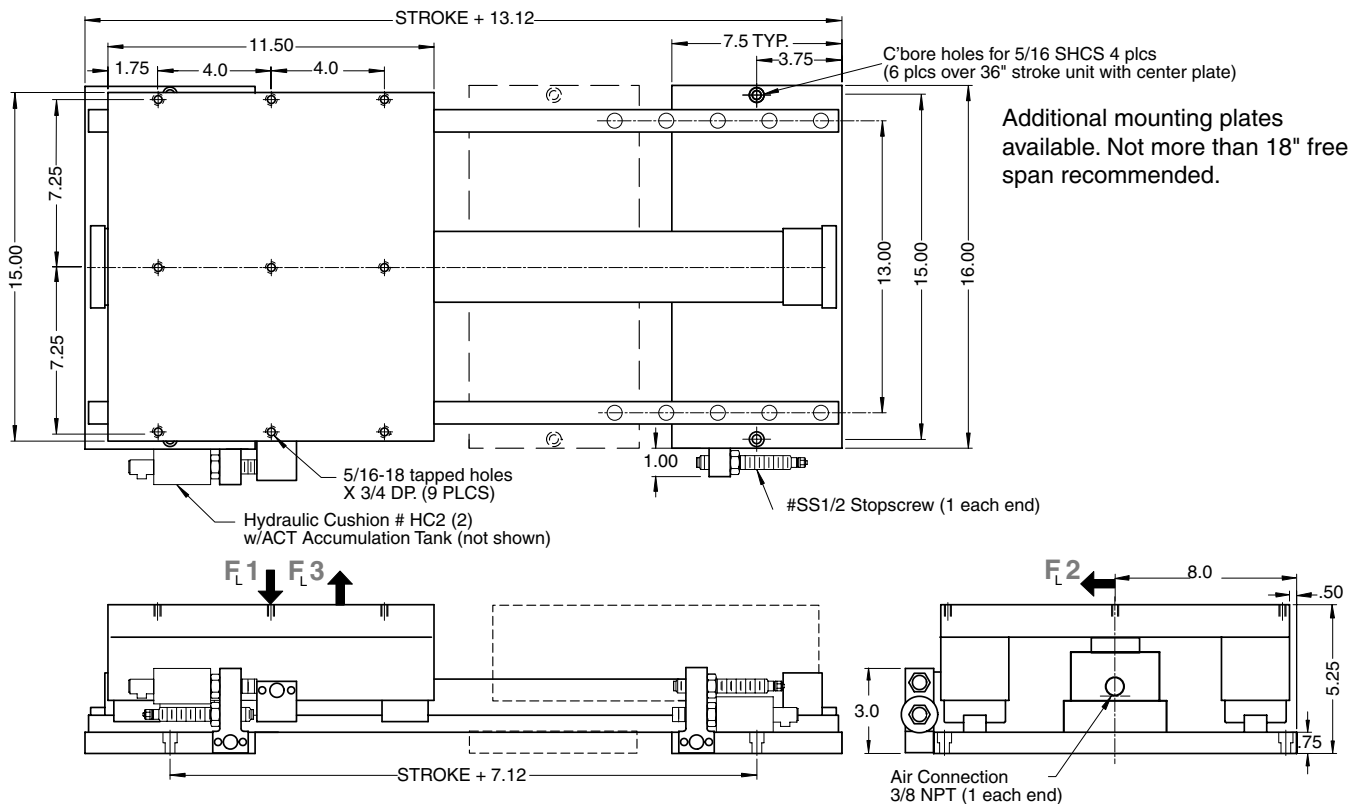


# TSHD-4W Table Slide



Note: The wide body slides are designed for cantilever loads on the carrier or high right angle torque applications.

**G**



**Order:**  
**TSHD-4W-(stroke)**  
 Bore = 1 1/2"  
 Force at 80 psi: 120 lbs

F<sub>L1</sub> = 480  
 F<sub>L2</sub> = .75 x F<sub>L1</sub>  
 F<sub>L3</sub> = .50 x F<sub>L1</sub>  
 Approx. Weight = 55 lbs + .30 x (stroke) = lbs  
 Available strokes up to 144" in 1" increments

**Technical data**

- Stroke designed with built in stopscrews with fine threads
- The stopscrews can be used with sensing switches
- Designed for production rates and long life
- Seal kits and rebuilt kits available.

Operating medium	Compressed air
Operating pressure	60-100 psi
Repeat accuracy	±0.0005 in
Air connection	3/8 NPT