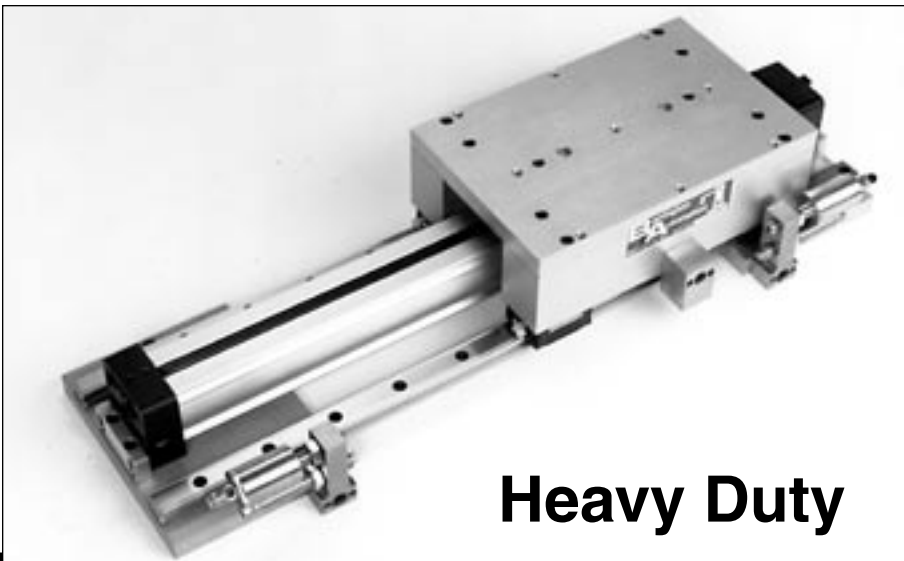


# TSHD-4 Table Slide

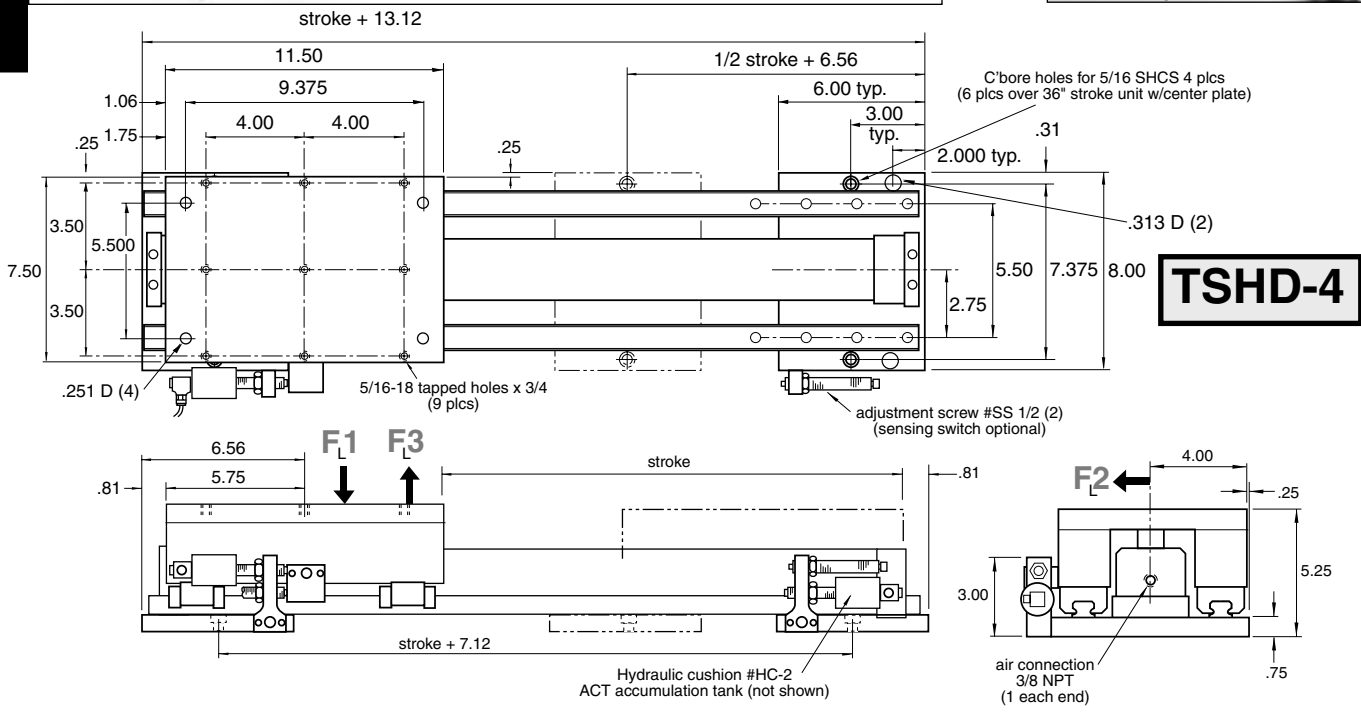


## Heavy Duty



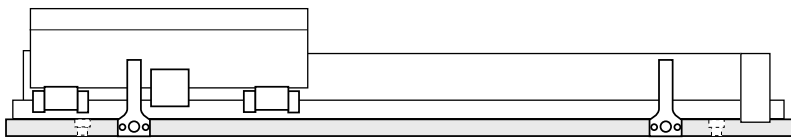
Optional sensing switches available.  
See pages 143-149

G



**TSHD-4**

**TSHD-R-4**



Continuous reinforced mounting plate (6 mtg holes over 36" stroke)

**Order:**  
**TSHD-4-(stroke)** F<sub>L1</sub> = 480 (640 reinforced)  
**TSHD-R-4-(stroke) (reinforced)** F<sub>L2</sub> = .75 x F<sub>L1</sub>  
 Bore = 1 1/2" F<sub>L3</sub> = .50 x F<sub>L1</sub>  
 Force at 80 psi: 120 lbs  
 Approx. Weight = 35 lbs + .16 x (stroke) = lbs  
 Available strokes up to 144" in 1" increments

**Technical data**

- |   |                    |                |
|---|--------------------|----------------|
| -Stroke designed with built in stopscrews with fine threads | Operating medium   | Compressed air |
| -The stopscrews can be used with sensing switches           | Operating pressure | 60-100 psi     |
| -Designed for production rates and long life                | Repeat accuracy    | ±0.0005 in     |
| -Seal kits and rebuilt kits available.                      | Air connection     | 3/8 NPT        |