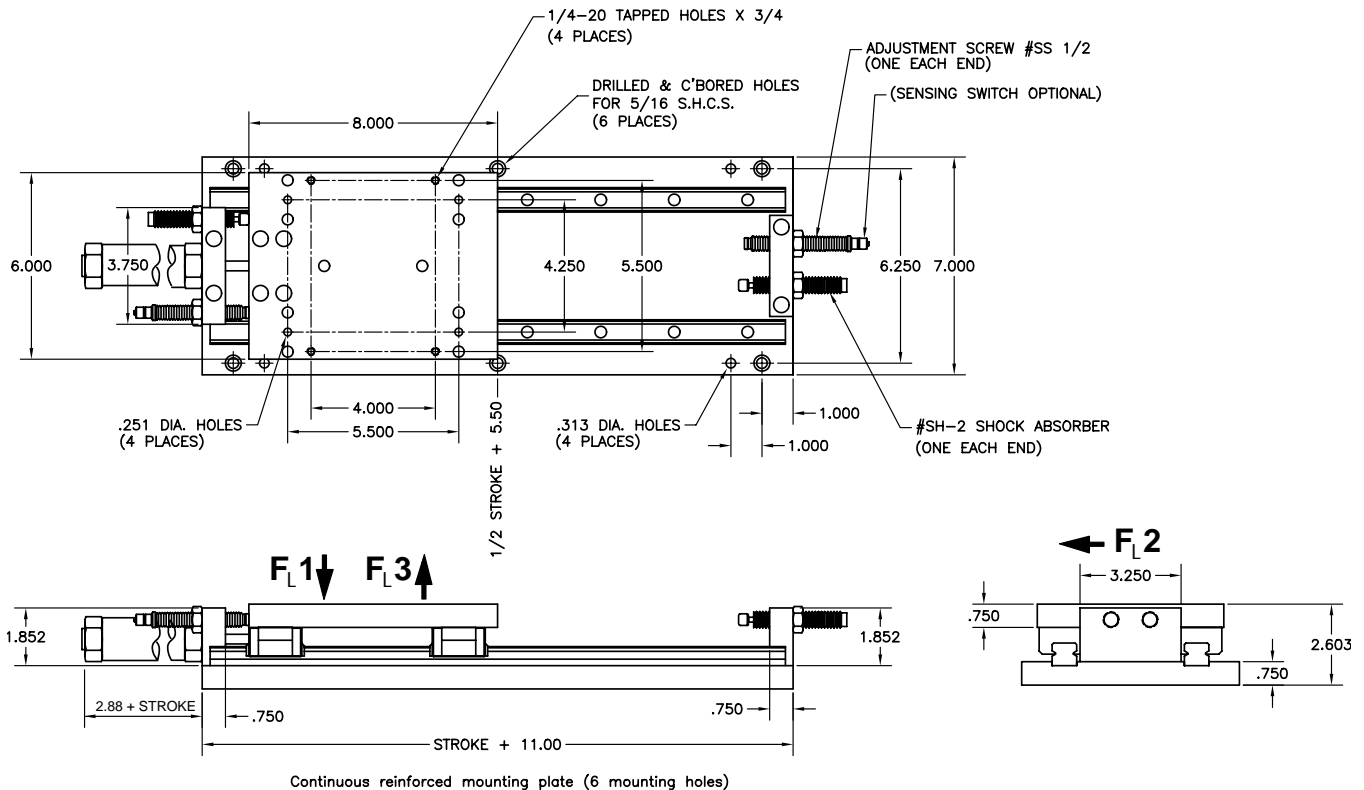
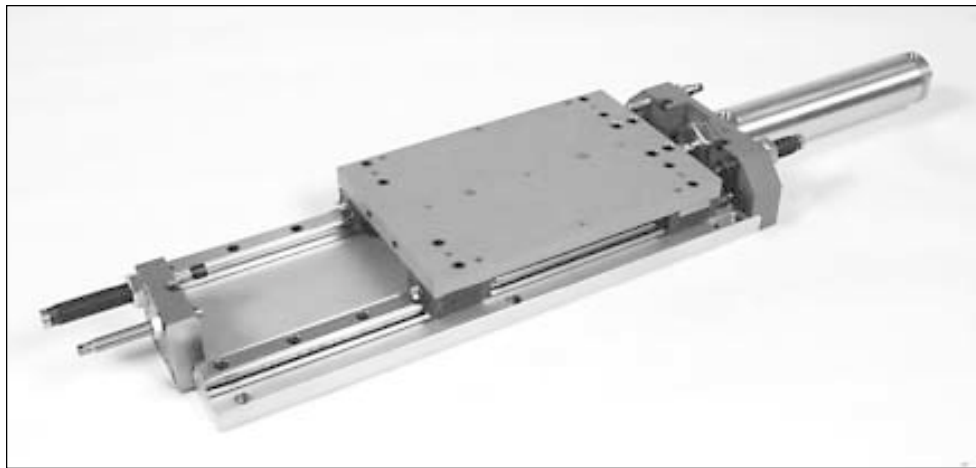


TSB-4 Table Slide



Order:
TSB-4(stroke)
 Bore = 2"
 Force at 80 psi: 190 lbs

$F_L1 = 640$
 $F_L2 = .75 \times F_L1$
 $F_L3 = .50 \times F_L1$
 Approx. Weight = 35 lbs + .16 x (stroke) = lbs
 Available strokes up to 12" in 1" increments

Technical data

- Stroke designed with built in stopscrews with fine threads
- The stopscrews can be used with sensing switches
- Designed for production rates and long life
- Seal kits and rebuilt kits available.

Operating medium
 Operating pressure
 Repeat accuracy
 Air connection

Compressed air
 60-100 psi
 ± 0.0005 in
 1/4 NPT