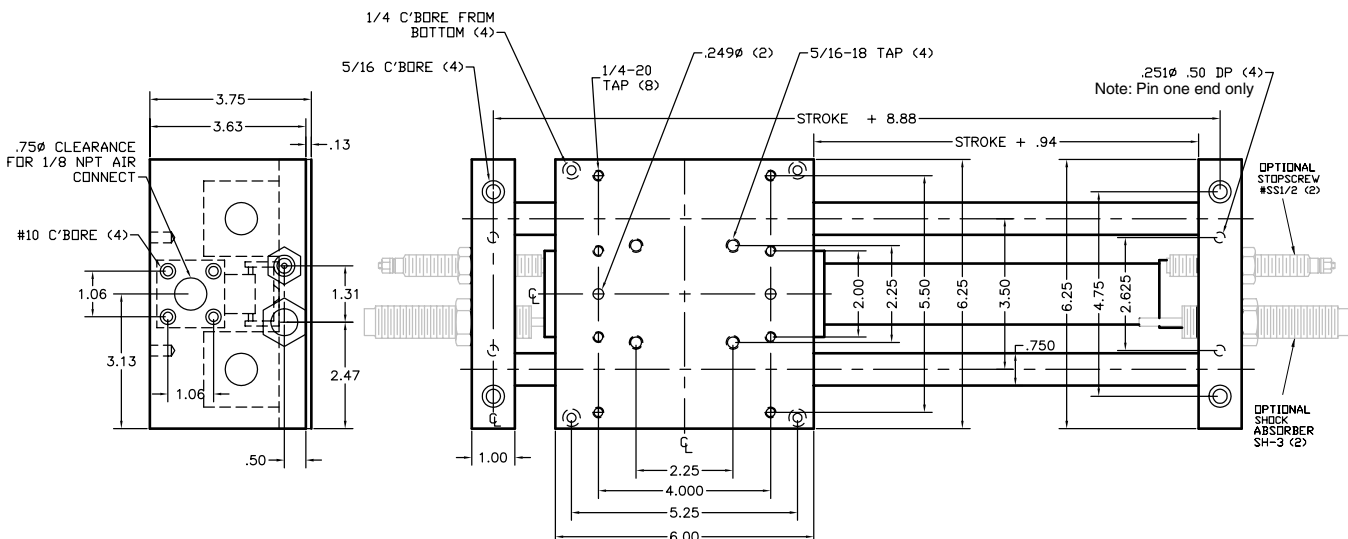


**H**

## Features

- External mounted rodless cylinder
- Rodless cylinder for short overall length
- 0.750 dia. case hardened & ground shafts
- 4 linear ball bearings with long life bearing seals
- Tapped & dowel pin holes in anodized body for ease of mounting
- Tapped & dowel pin holes in anodized end plates for ease of mounting
- Hardened adjustable stopscrews for accurate and repeatable positioning available (see page 146)
- Hydraulic shock absorbers available (see page 139)
- End of stroke sensing switches are available for stop-screws (see page 143-149)

## Dimensions



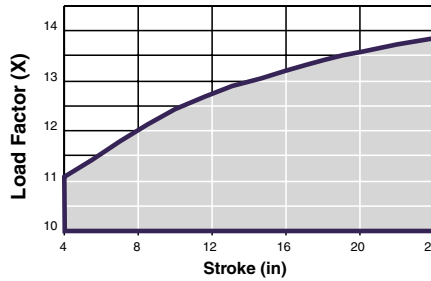
NOTE: Flow controls are recommended for all applications.

# TS-3 Table Slide

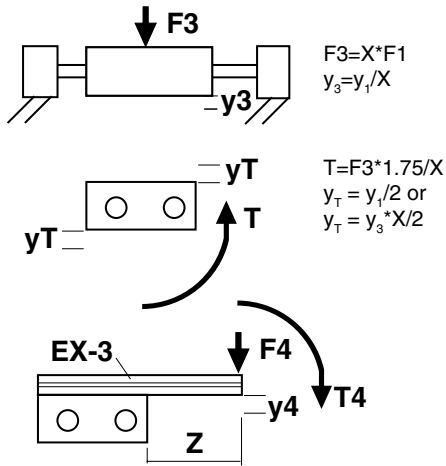
## Technical Data

- Bore = 1"
- Force @ 80 psi = 60 lbs
- Operating medium = compressed air 60-100 psi
- Air connection = 1/8 NPT
- Repeat accuracy = +/-0.0005"
- Life expectancy = >100 million travel inches
- Force diagrams below depict the load and the resultant deflection caused by that force (or torque).

## Load Factor (x)



The load factor (X) is used in calculations as a relationship between a load on the ends (F1) versus a load in the center (F3).



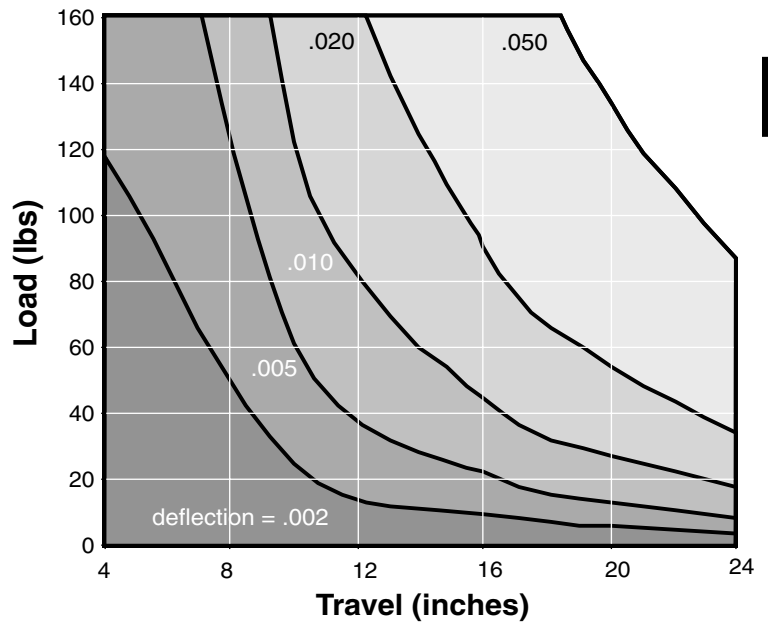
For  $T_4 = T$ ;  
 If  $T_4 = F_4 * (z + 1.75)$  and  $T = F_3 * 1.75 / X$  then,

$$F_4 = F_3 * 1.75 / (X * (z + 1.75))$$

F4 is the force that will cause a deflection ( $y_4$ ) at the block's edge. To determine the deflection at the cantilever end use the following:

$$y_4 = F_4 * z^3 / (9.78E+07)$$

## F3 Load vs. Travel at set Deflection ( $y_3$ ) for the TS-3



## Ordering & Options

TS - 3 - [ ] - [ ]

STROKE  
(1" to 24")

- C = Base TS with internal air cushion standard
- SS = with 2 Stop Screws
- SH = with 2 Shock Absorbers
- SB = with both Stopscrews & Shock Absorbers

For end of stroke sensing, see page 143-149

