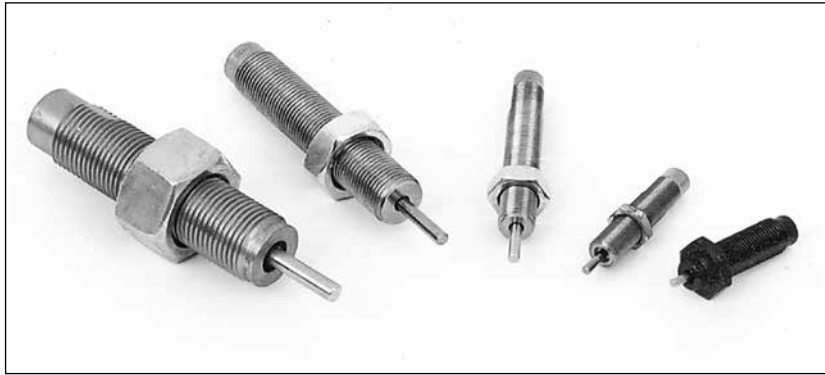


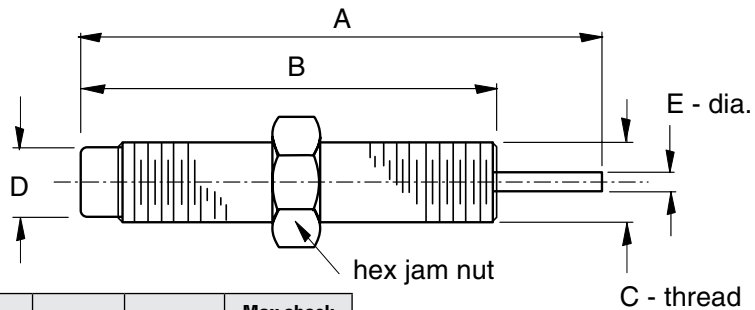
# Shock Absorbers

The progressive damping characteristics and built in "self compensation" design, decelerates a moving mass by minimizing the reaction force at impact and gradually increasing the resistance force throughout the working stroke of the shock absorber. (i.e.: higher speeds with softer stops)

- Chrome plated piston rod
- Standard operating temp range  
15° F. - 180° F.
- Threaded body for ease of mounting
- Progressive damping characteristics



Note: shock absorbers should be adjusted such that it is **not** used as the final stop. Stop screws are designed for this purpose (see page 86)



	Stroke	A	B	C	D	E	Max shock force
<b>SH-1</b>	13/32	2.38	1.97	7/16-28	3/8	.12	140 lbs
<b>SH-2</b>	5/8	3.84	3.20	1/2-20	7/16	.16	450 lbs
<b>SH-2S</b>	1/4	2.10	1.82	1/2-20	7/16	.12	250 lbs
<b>SH-3</b>	7/8	4.66	3.76	3/4-16	5/8	.19	700 lbs
<b>SH-4</b>	1.0	5.07	4.04	1-12	7/8	.25	1000 lbs