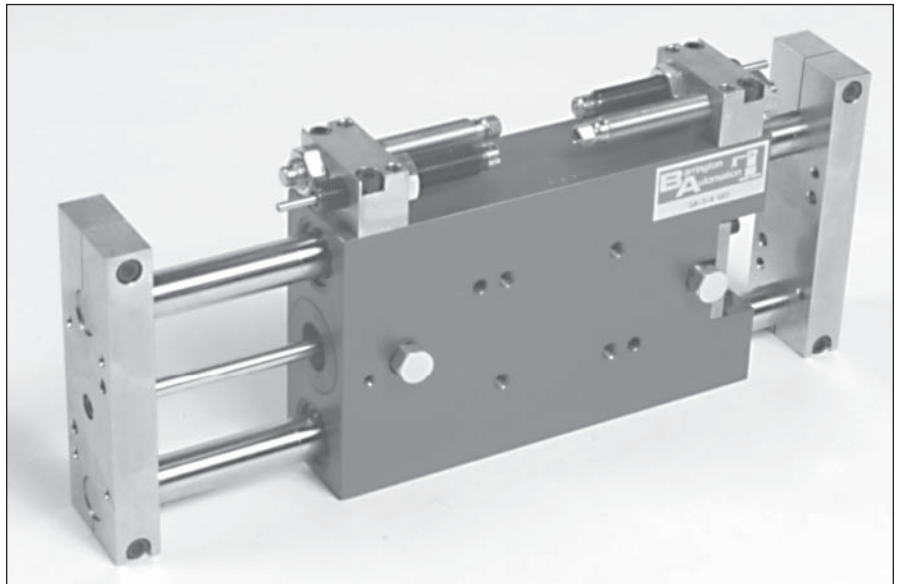


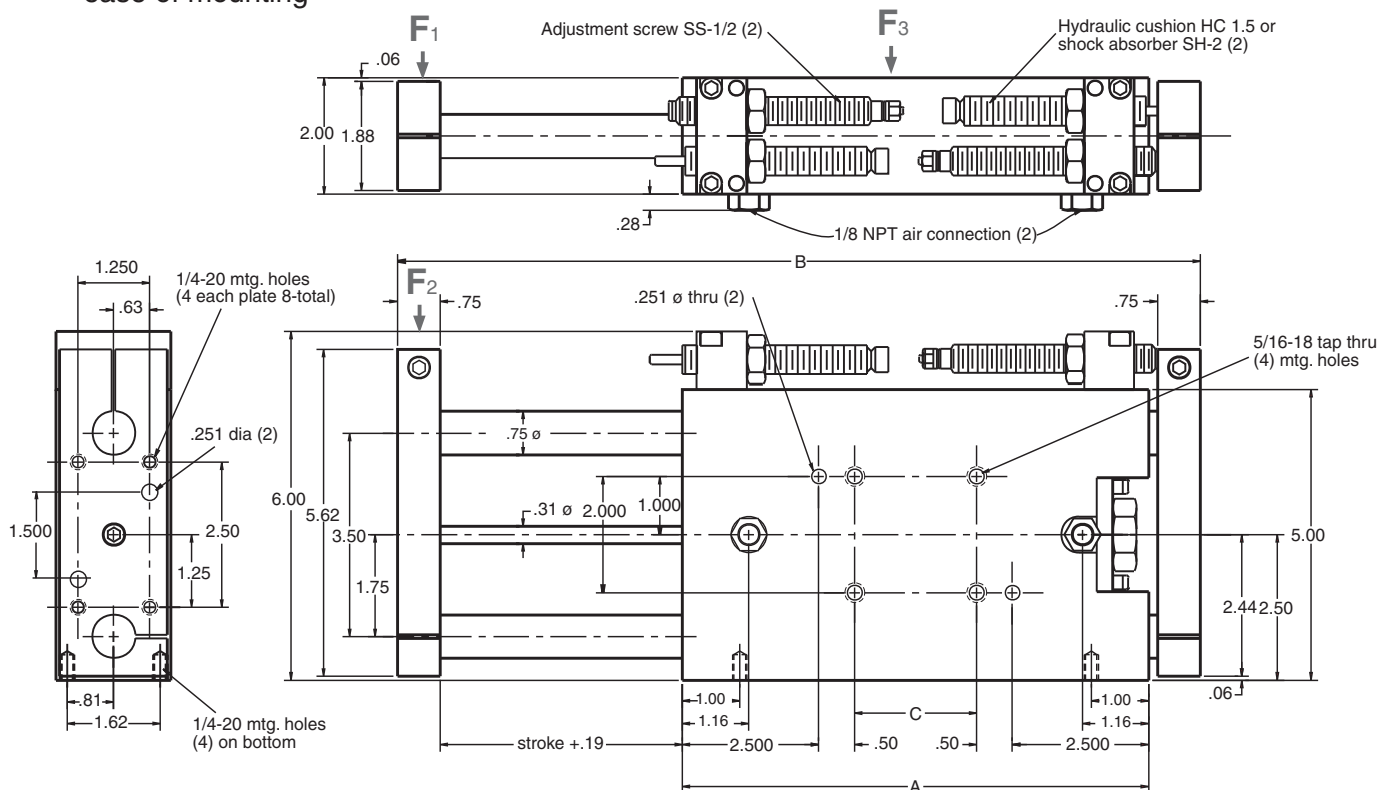
# LA-3 Linear Actuator

## Features

- 1 1/8" bore
- 0.750" dia. case hardened & ground shafts
- 4 linear ball bearings and seals
- Cylinders can be rebuilt
- Chrome plated cylinder rods
- Adjustable stopscrews for end of stroke adjustment
- Sensing switches can be used with stopscrews
- Compressed air from 60-100 psi
- 1/8 NPT air connection
- Tapped & dowel pin holes in anodized body for ease of mounting



- End blocks anodized and include tapped & dowel pin holes



Type	Stroke	A	B	C	Weight
LA-3-4	0-4"	8.12	14.00	2.12	16
LA-3-8	0-8"	12.12	22.00	6.12	20

## Ordering

The LA-3 comes in four standard stroke lengths: = 4, 8. Custom stroke lengths are available upon request.

LA-3- #

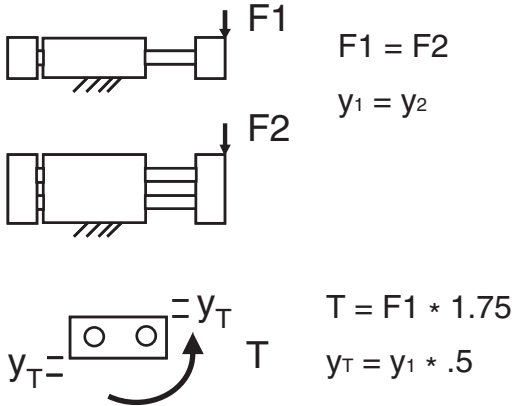
# LA-3 Linear Actuator



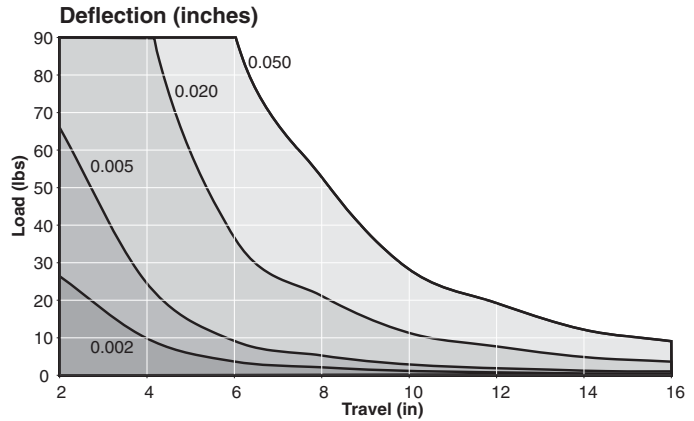
## Technical Data

Force @ 80 psi = 72 lbs  
 Repeat accuracy = +/-0.0005"  
 Life expectancy = >100 million travel inches

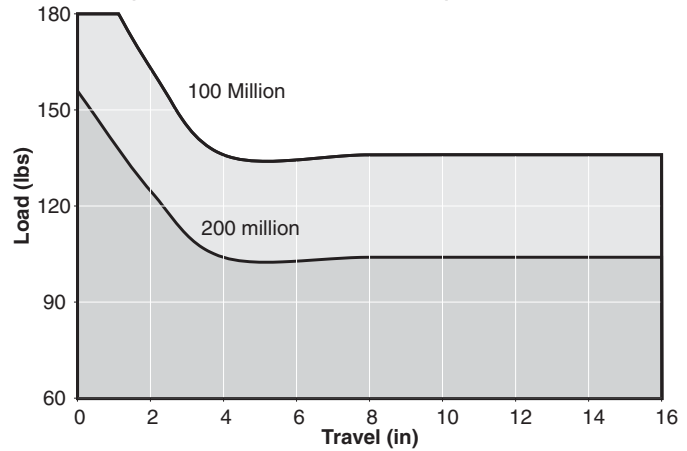
Force diagrams below depict the load (F#) and the resultant deflection (y#) caused by that force (or torque T).



## F1 Load vs. Travel at set Deflections for the LA-3



## Life (millions of inches of travel) vs. Travel & Load



## Options

Sensing switches are available as an option. They are mounted to the stopscrews as seen in the photo to the right. For specifications on sensing please see page 49.

