

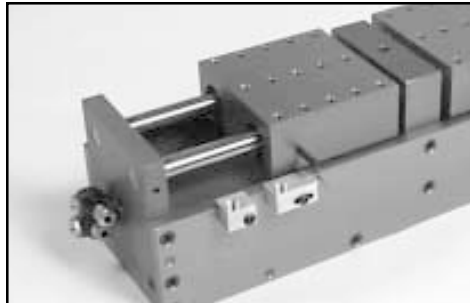
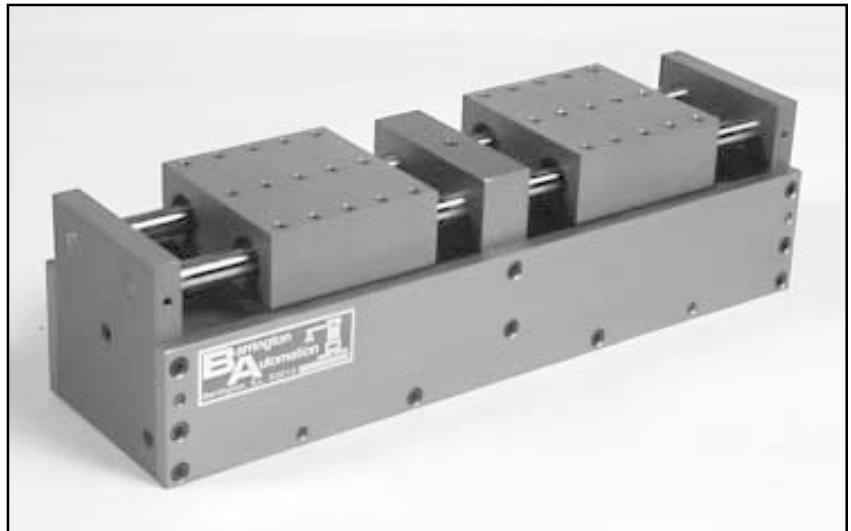
Heavy Duty Gripper True Parallel Motion Double Acting



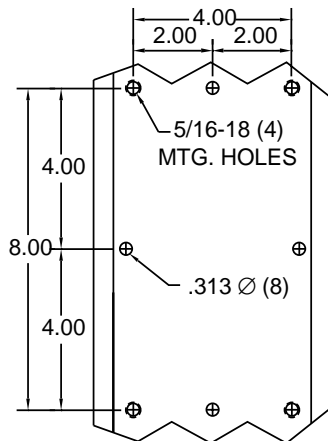
GHD-6

Heavy duty grippers have true parallel motion and are recommended for loads up to 200 lbs.

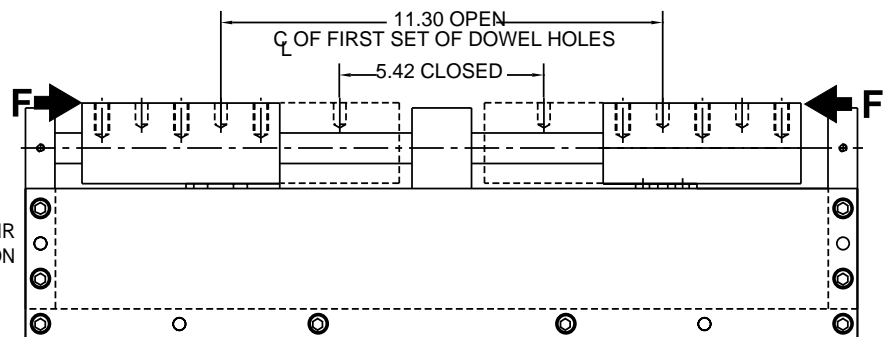
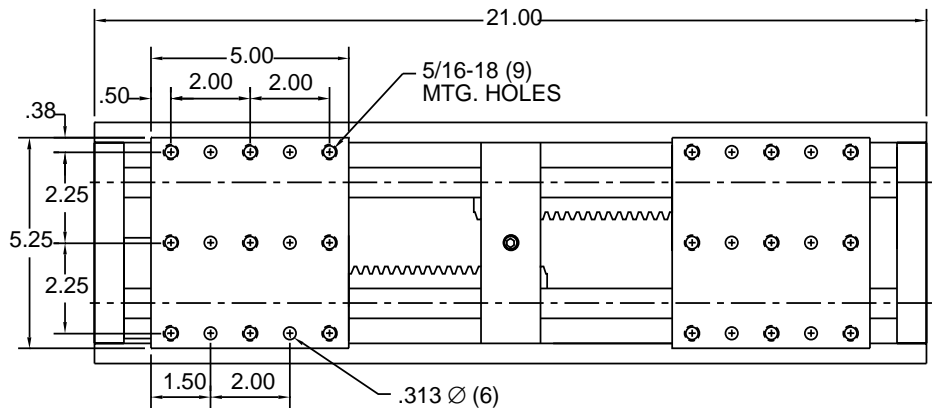
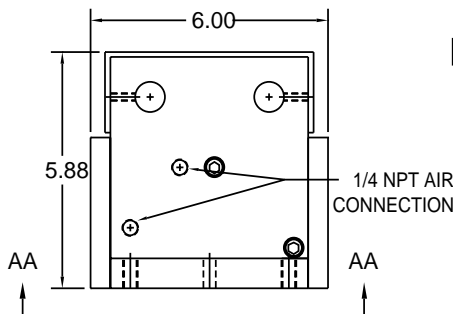
Tool mounting pads are drilled and tapped for your tooling. Gripper body is anodized aluminum.



See page 36 for sensing specification



VIEW AA
BOTTOM PLATE MOUNTING HOLES



TECHNICAL DATA:

Weight	38 lbs	Gripping Force @ 80 PSI	360 lbs @ F
Max Recommended Load	200 lbs	Operating Pressure	60-100 PSI
		Stroke	5.9 in