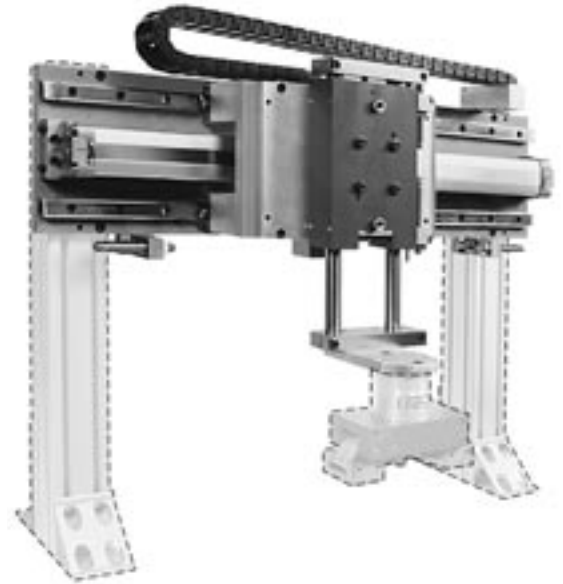
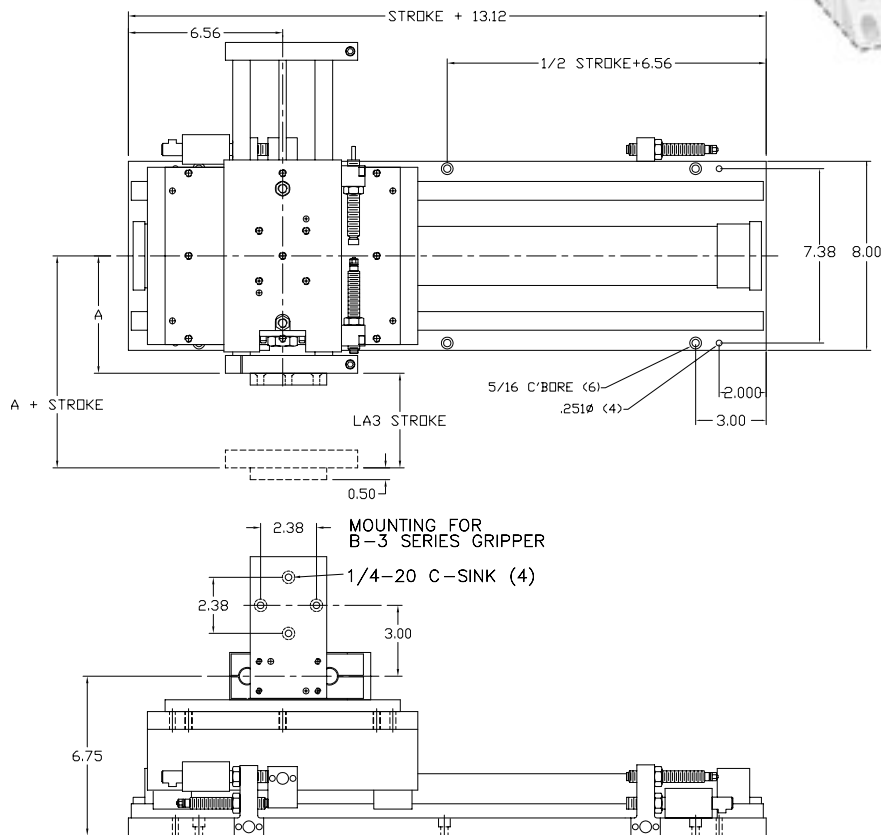


Features

- Fully assembled Pick & Place unit with all mounting components and cable carrier for pneumatic lines—ready to install, plumb and run.
- Components come with our stopscrew system for accurate stroke adjustment and optional sensing capabilities. (see page 146)
- Made from our standard proven precision components.
- We will supply a gripper mounting plate or make a custom one for any end-effector.



Dimensions



The CMU-TSL43 includes a TSHD-4, LA-3, adapter plate, and gripper mounting plate. Grippers, sensors and mounting posts ordered separately. For sensors, see page 143. For grippers, see pages 3-54. For Mounting posts and hardware, see page 176.

Dimension	LA3-4	LA3-8	LA3-12	LA3-16
A	5.0"	7.0"	9.0"	11.0"

Ordering

CMU-TSL43- - -

TSHD Size
stroke in inches

LA-3 Size
4 - 4" stroke
8 - 8" stroke
12 - 12" stroke
16 - 16" stroke

Gripper Hub
N - No Hub
1 - Hub adapter (B-1 series gripper)
2 - Hub adapter (B-2 series gripper)
3 - Hub adapter (B-3 series gripper)

Technical Data

TSHD-4 = 1-1/2" BORE
LA -3 = 1-1/8" BORE
AIR CONNECTION = 1/4 NPT (TSHD-4), 1/8 NPT (LA-3)
AIR PRESSURE = 60 – 110 PSI
RECOMMENDED LOAD = 40 lbs.

