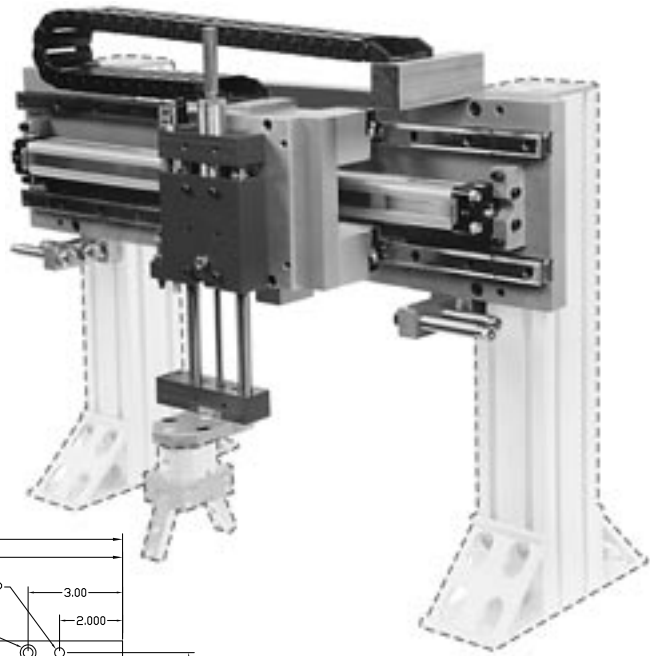


# CMU-TSL32 Combined Motion Linear

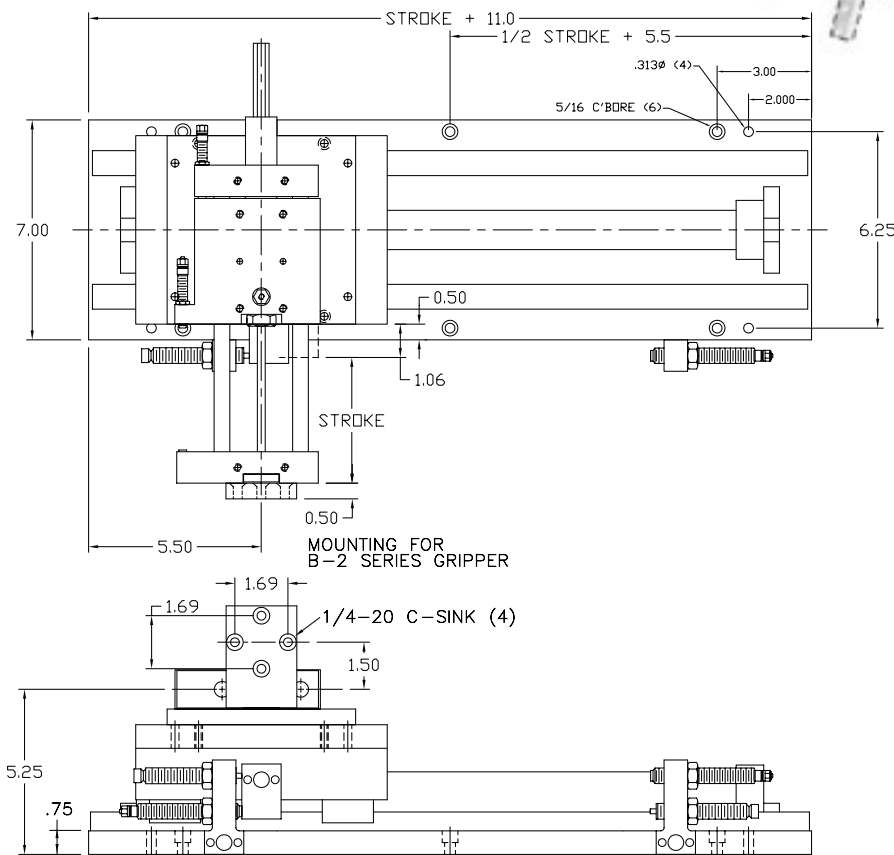


## Features

- Fully assembled Pick & Place unit with all mounting components and cable carrier for pneumatic lines—ready to install, plumb and run.
- Components come with our stopscrew system for accurate stroke adjustment and optional sensing capabilities. (see page 146)
- Made from our standard proven precision components.
- We will supply a gripper mounting plate or make a custom one for any end-effector.



## Dimensions



The CMU-TSL32 includes a TSHD-3, LA-2, adapter plate, and gripper mounting plate. Grippers, sensors and mounting posts ordered separately. For sensors, see page 143. For grippers, see pages 3-54.

## Ordering

**CMU-TSL32-**  -  -

TSHD Size  
stroke in inches

LA-2 Size  
2 - 2" stroke  
4 - 4" stroke  
6 - 6" stroke  
8 - 8" stroke

Gripper Hub  
N - No Hub  
1 - Hub adapter (B-1 series gripper)  
2 - Hub adapter (B-2 series gripper)

## Technical Data

TSHD-3 = 1" BORE  
 LA -2 = 3/4" BORE  
 AIR CONNECTION = 1/8 NPT  
 (TSHD-3), 10-32 (LA-2)  
 AIR PRESSURE = 60 – 110 PSI  
 RECOMMENDED LOAD = 20 lbs.