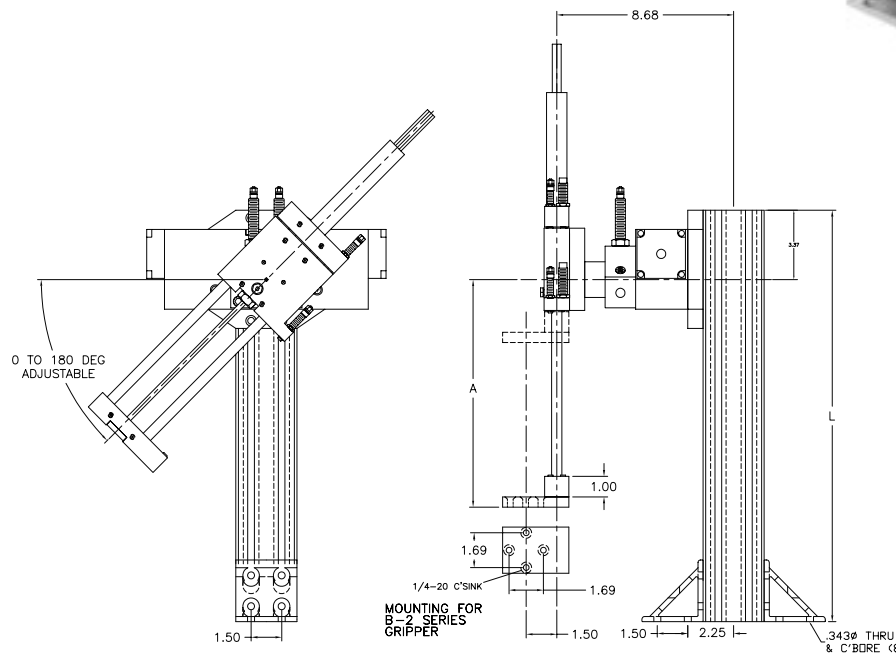


Features

- Fully assembled Pick & Place unit with all mounting components — ready to install, plumb and run.
- Components come with our stopscrew system for accurate stroke adjustment and optional sensing capabilities. (see page 146)
- Made from our standard proven precision components.
- We will supply a gripper mounting plate or make a custom one for any end-effector.

Dimensions



The CMU – RL42 includes mounting stand, RD-4, LA-2, and adapter plates. Grippers and sensors ordered separately. For sensors, see page 143. For grippers, see pages 3-54.

Dimension	LA2-2	LA2-4	LA2-6	LA2-8
A	10.6"	12.6"	14.6"	16.6"

Ordering

CMU-RL42 - [] - [] - [] - []

LA-2 Size
 2 - 2" stroke
 4 - 4" stroke
 6 - 6" stroke
 8 - 8" stroke

EX-3 Height (L)
 0 - No stand
 14" to 20" stand

Gripper Hub
 N - No Hub
 1 - Hub adapter (B-1 series gripper)
 2 - Hub adapter (B-2 series gripper)

Shock Absorbers
 N - No Shock Absorbers
 S - 2 Shock Absorbers for RD-4

Technical Data

LA -2 = 3/4" BORE
 RD-4 = 2" BORE
 AIR CONNECTION = 10-32 (LA-2), 1/4 NPT (RD-4)
 AIR PRESSURE = 60 – 110 PSI
 RECOMMENDED LOAD = 4 lbs.
 For all other technical specifications see Modular Automation catalog.

