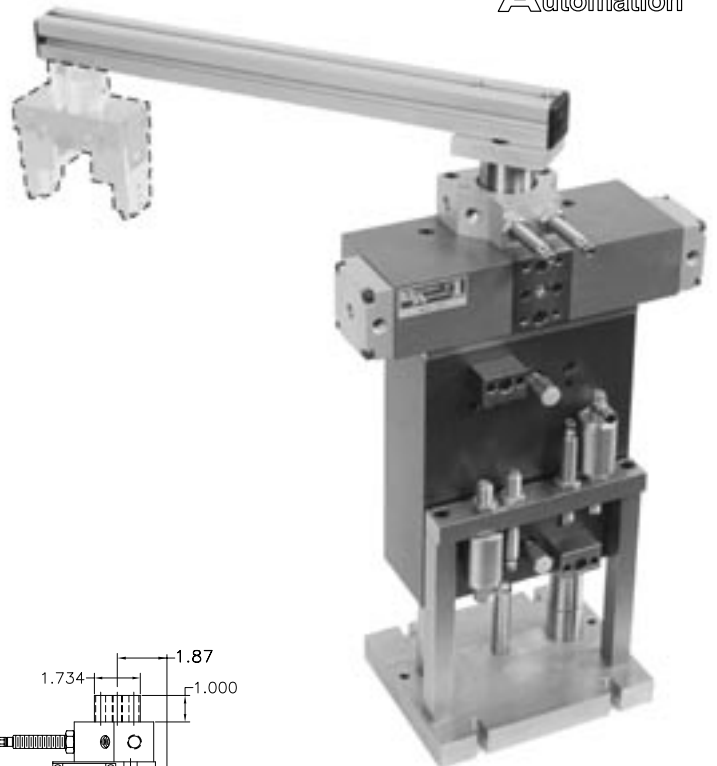
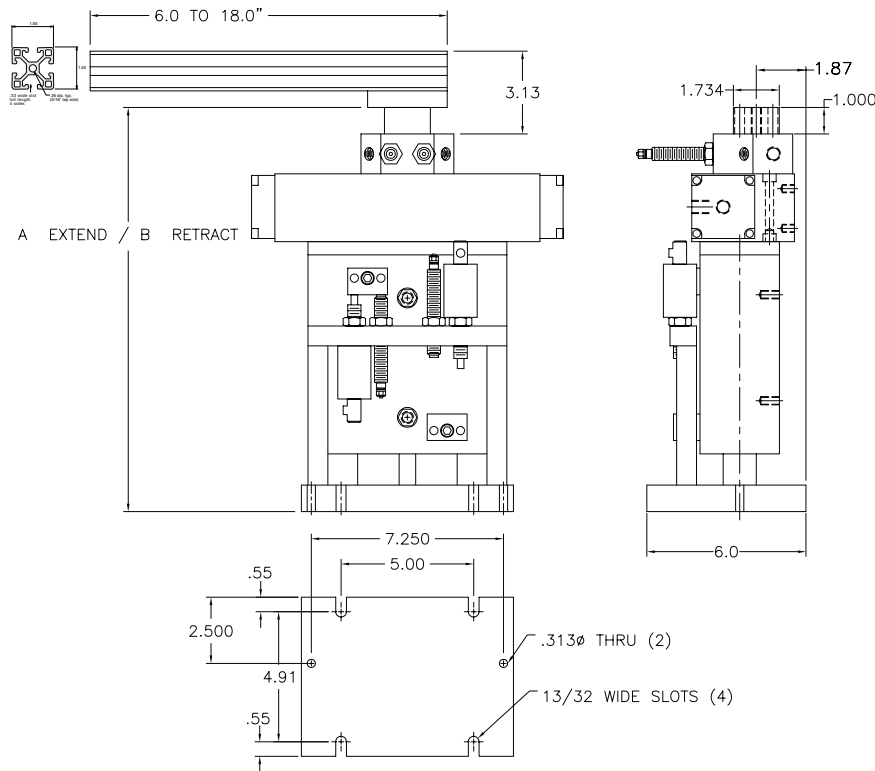


Features

- Fully assembled Pick & Place unit with all mounting components—ready to install, plumb and run.
- Components come with our stopscrew system for accurate stroke adjustment and optional sensing capabilities. (see page 146)
- Made from our standard proven precision components.
- We will supply a gripper mounting plate or make a custom one for any end-effector.



Dimensions



The CMU – ER44 includes an ET-4, RD-4, arm adapter plate, and extrusion arm. Gripper hub, gripper and sensors ordered separately. For sensors, see page 143. For grippers, see pages 3-54.

Dimension	ET-4-2	ET-4-4
A	17.24"	21.24"
B	15.24"	17.24"

Ordering

CMU-ER44 -

ET-4 Size
2 - 2" stroke
4 - 4" stroke

Shock Absorbers
N - No Shock Absorbers
S - 2 Shock Absorbers for RD-4

EX-6 Arm Length
0 - No Adapter, No Arm
6-18 - 6" to 18" Arm w/Adapter
(specify length in inches)

Technical Data

ET -4 = 2" BORE
RD -4 = 2" BORE
AIR CONNECTION = 1/8 NPT (ET-4), 1/4 NPT (RD-4)
AIR PRESSURE = 60 – 110 PSI
RECOMMENDED LOAD = 4 to 16 lbs.