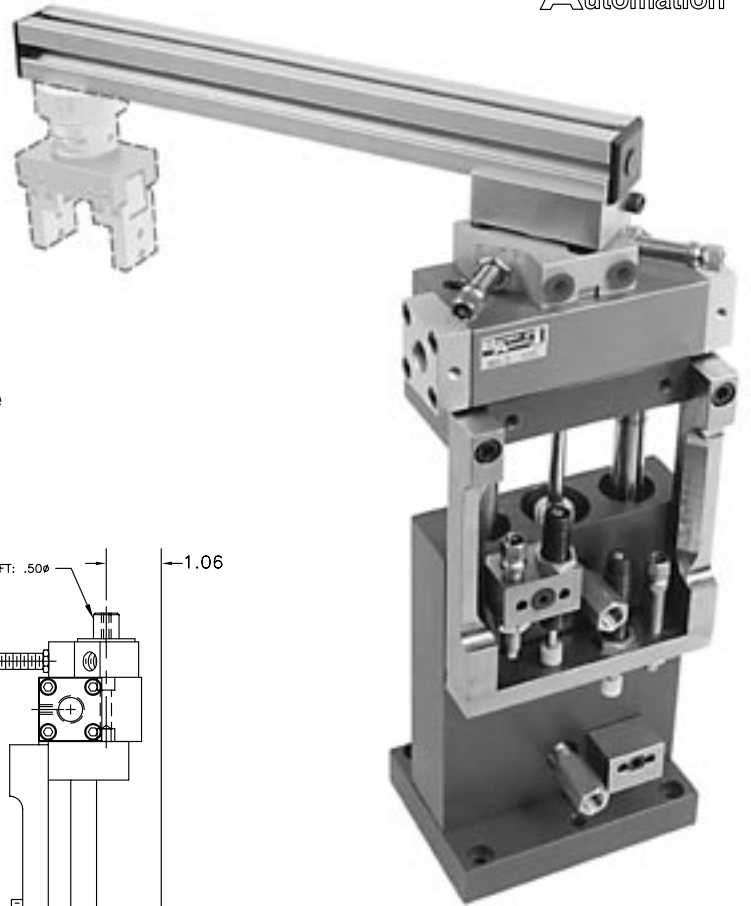
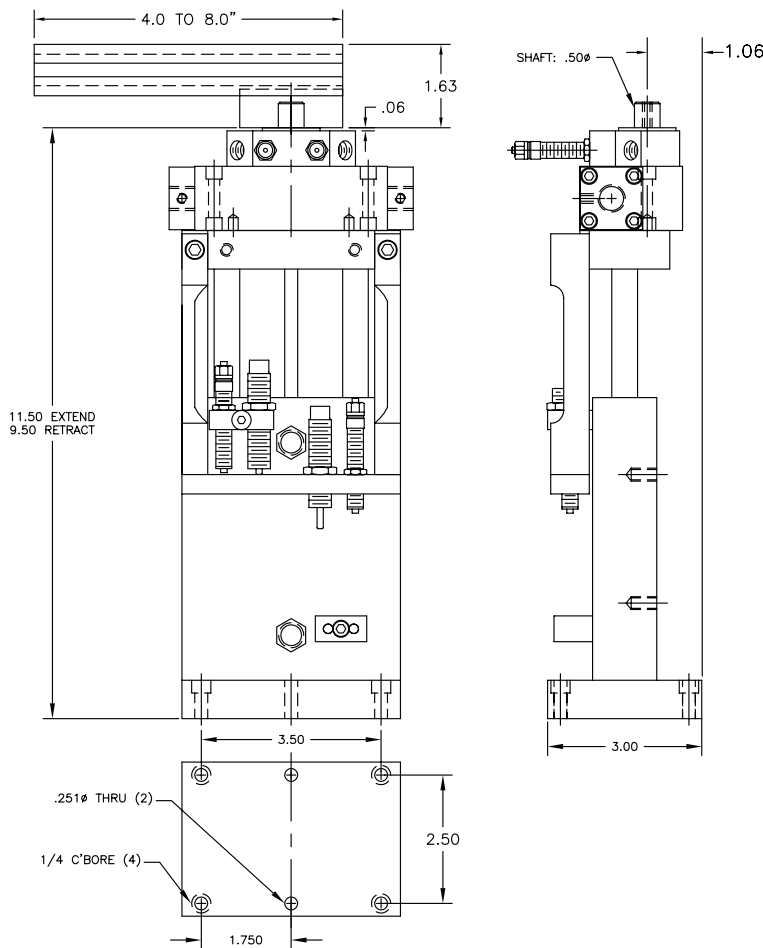


Features

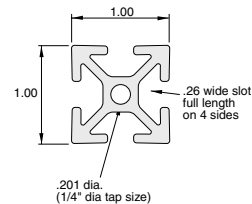
- Fully assembled Pick & Place unit with all mounting components ready to install, plumb and run.
- Components come with our stopscrew system for accurate stroke adjustment and optional sensing capabilities. (see page 146)
- Made from our standard proven precision components.
- We will supply a gripper mounting plate or make a custom one for any end-effector.



Dimensions



The CMU – ER22 includes an ET-2-2, RD-2, arm adapter plate, and extrusion arm. Gripper hub, gripper, and sensors ordered separately. For sensors, see page 143. For grippers, see pages 3-54.



Ordering

CMU-ER22 - [] - []

EX-11 Arm Length
 0 - No Adapter, No Arm
 4-8 - 4" to 8" Arm w/Adapter
 (specify length in inches)

Shock Absorbers
 N - No Shock Absorbers
 S - 2 Shock Absorbers for RD-2

Technical Data

ET -2 = 3/4" BORE
 RD -2 = 3/4" BORE
 AIR CONNECTION = 1/8 NPT
 (ET-2), 10-32 (RD-2)
 AIR PRESSURE = 60 – 110 PSI
 RECOMMENDED LOAD = 2 lbs.