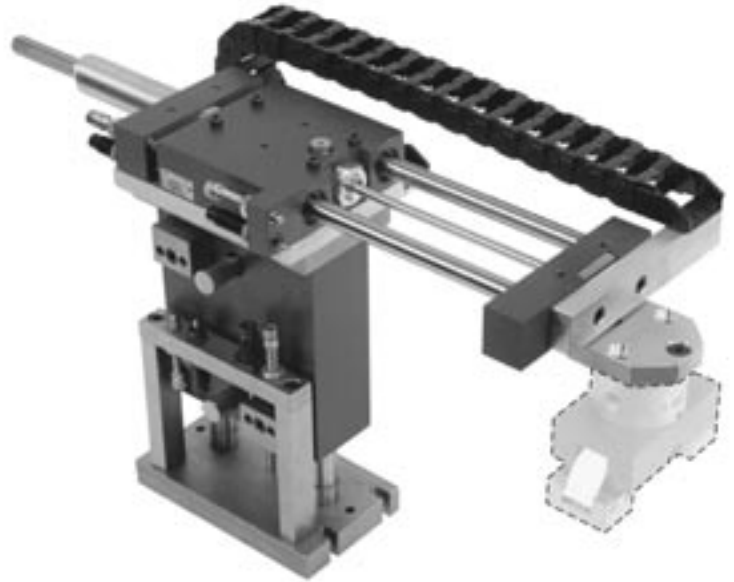
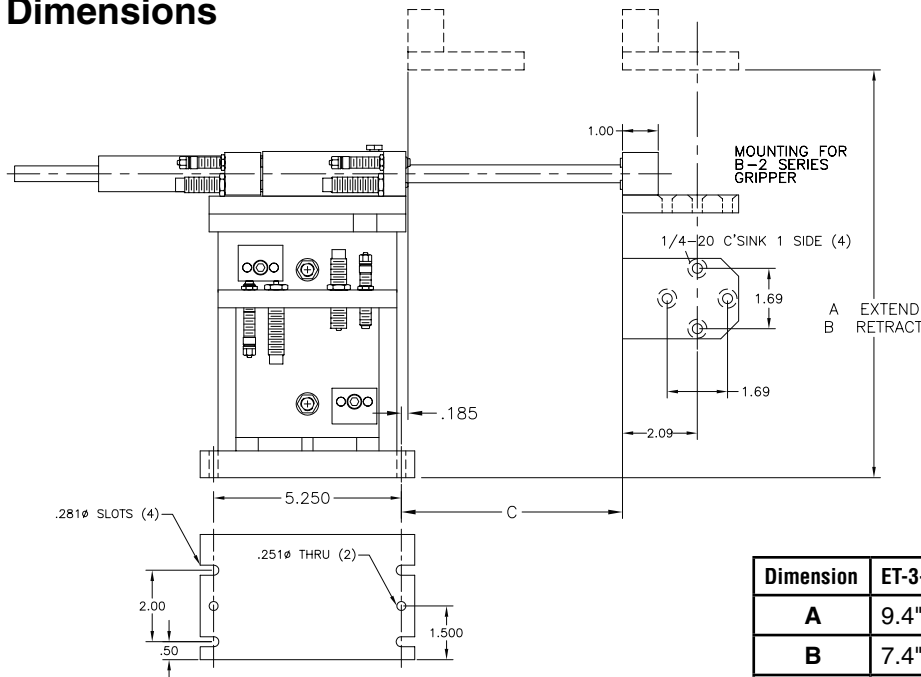


Features

- Fully assembled Pick & Place unit with all mounting components and cable carrier for pneumatic lines—ready to install, plumb and run.
- Components come with our stopscrew system for accurate stroke adjustment and optional sensing capabilities. (see page 146)
- Made from our standard proven precision components.
- We will supply a gripper mounting plate or make a custom one for any end-effector.



Dimensions



The CMU-EL32 includes an ET-3, LA-2, adapter plate, and gripper mounting plate. Grippers and sensors ordered separately. For sensors, see page 143. For grippers, see pages 3-54.

Dimension	ET-3-2	ET-3-4	LA2-2	LA2-4	LA2-6	LA2-8
A	9.4"	13.4"				
B	7.4"	9.4"				
C			2.19	4.19	6.19	8.19

Ordering & Options

CMU-EL32 - [] - [] - []

ET-3 Size
2 - 2" stroke
4 - 4" stroke

LA-2 Size
2 - 2" stroke
4 - 4" stroke
6 - 6" stroke
8 - 8" stroke

Gripper Hub
N - No Hub
1 - Hub adapter (B-1 series gripper)
2 - Hub adapter (B-2 series gripper)

Technical Data

ET -3 = 1-1/8" BORE

LA -2 = 3/4" BORE

AIR CONNECTION =
1/8 NPT (ET-3),
10-32 (LA-2)

AIR PRESSURE = 60 – 110 PSI

RECOMMENDED LOAD = 4 to
12 lbs. (based on LA-2 stroke)