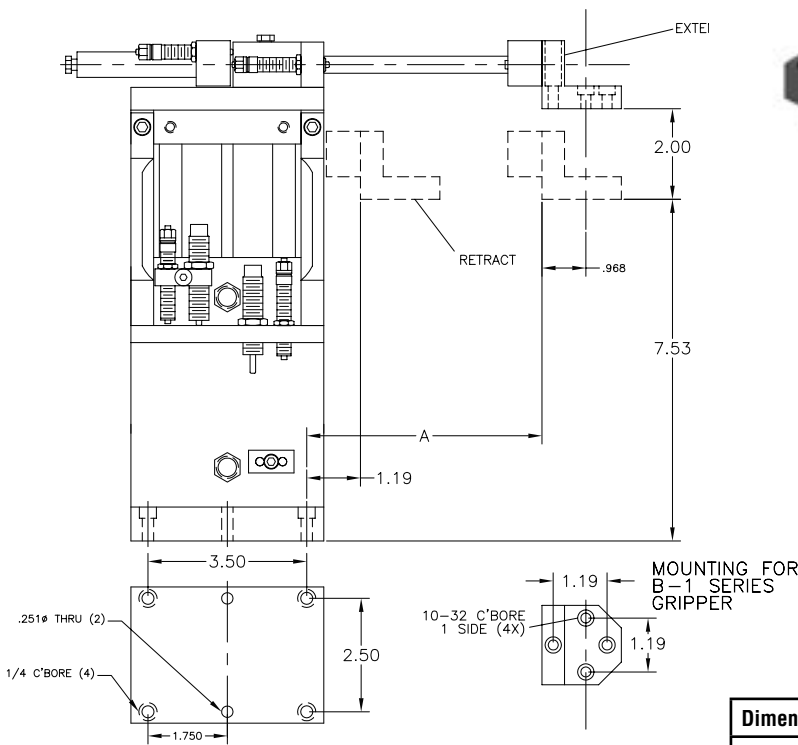


Features

- Fully assembled Pick & Place unit with all mounting components—ready to install, plumb and run.
- Components come with our stopscrew system for accurate stroke adjustment and optional sensing capabilities. (see page 146)
- Made from our standard proven precision components.
- We will supply a gripper mounting plate or make a custom one for any end-effector.

Dimensions



The CMU-EL21 includes an ET-2-2, LA-1 adapter plate, and gripper mounting plate. Grippers and sensors ordered separately. For sensors, see page 143. For grippers, see pages 3-54.

Vertical dimensions are for an ET-2-2. For other elevating tables lengths adjust height accordingly.

Dimension	LA1-1	LA1-2	LA1-3	LA1-4
A	2.19"	3.19"	4.19"	5.19"

Ordering

CMU-EL21 - -

LA-1 Size

- 1 - 1" stroke
- 2 - 2" stroke
- 3 - 3" stroke
- 4 - 4" stroke

Gripper Hub

- N - No Hub
- 0 - Hub adapter (B-0 series gripper)
- 1 - Hub adapter (B-1 series gripper)

Technical Data

ET -2 = 3/4" BORE

LA -1 = 9/16" BORE

AIR CONNECTION = 1/8 NPT (ET-2), 10-32 (LA-1)

AIR PRESSURE = 60 – 110 PSI

RECOMMENDED LOAD = 4 lbs.