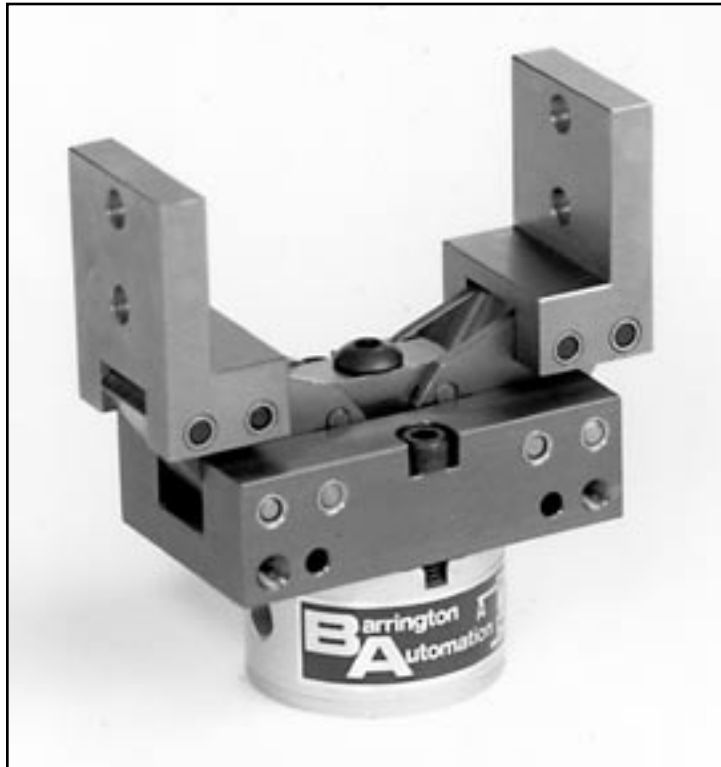


Gripper

PARALLEL MOTION
Double Acting

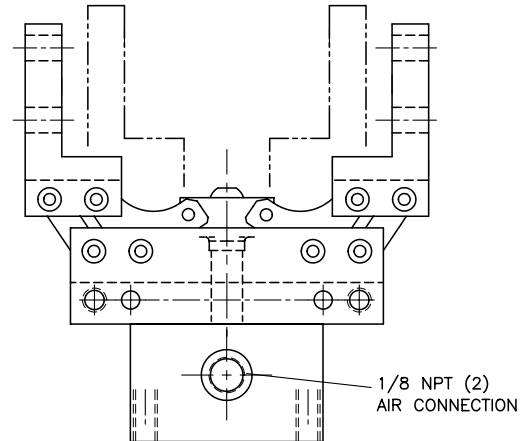


B-2P-VJ

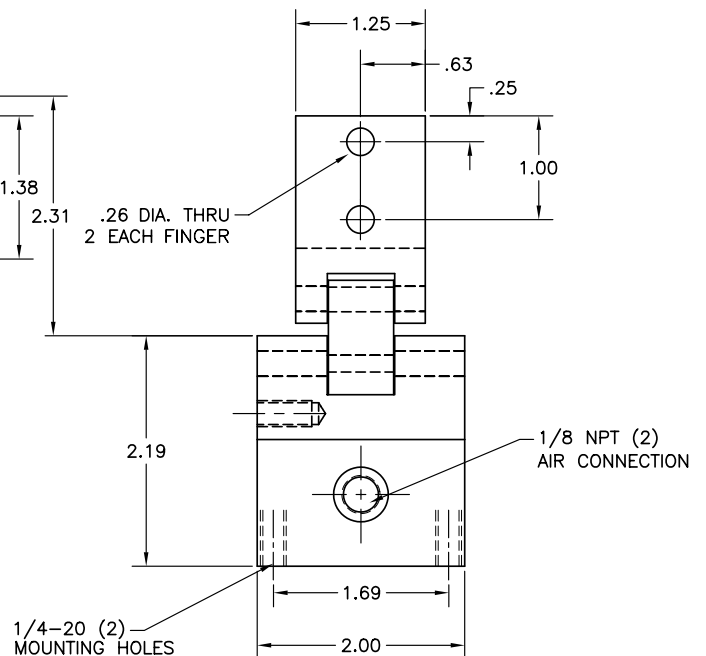
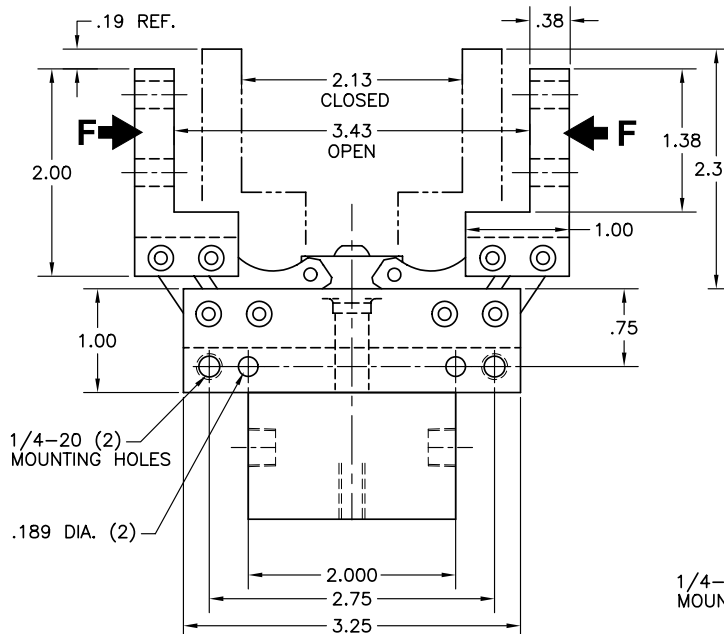


Optional

B-2P-VJ-R



Note: **R** indicates that the position of ports and mounting holes are rotated 90° from standard version as shown above.



Proximity sensors
preassembled for
open & closed positions
(see page 54)

TECHNICAL DATA

Weight	1.7 lbs
Max Rec. Load	12 lbs
Force @ 80 psi	40 lbs @ F
Operating Pressure	60-100 PSI